

DESIGN + DECOR

CONNECTICUT
NEW JERSEY
NEW YORK



The Amazing *Transformations* Issue

\$5.95 US

07



0 74470 23559 0



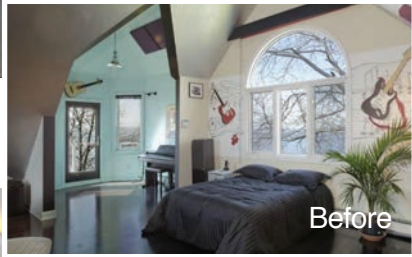
CARDELLO
ARCHITECTS



Some transformations and expansions first require a reductive effort, a peeling away and a paring down. The original house, situated on the water in Shippan, CT, had been renovated numerous times, resulting in a home with no coherence or continuity between spaces. David LaPierre of Cardello Architects needed to remove the remnants of numerous renovations and reconstruct or reconfigure key elements.

The clients were downsizing from their primary residence and wanted this home to embrace a more traditional farmhouse aesthetic that was very different from what they had before. "The primary reconfiguration we undertook was to capture the stunning water views," notes David. "Also, the original home was not FEMA-compliant, so we had to lift the house and redo the foundation."

Originally located on the water side of the home, the kitchen was moved to the interior of the





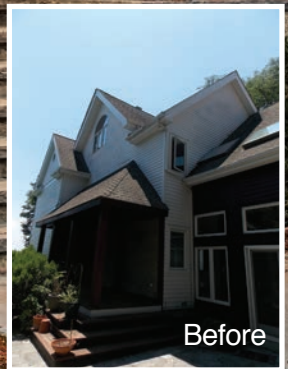
CREATE YOUR LEGACY

Superior Craftsmanship, Extraordinary Details

(914) 273-4511 | www.legacydevelopmentllc.com

Westchester | Fairfield | NYC | Hamptons | Nantucket

LEGACY
CONSTRUCTION NORTHEAST LLC.



house in the redesign. The family and dining rooms were positioned in the void left after the kitchen was moved. A solitary bay window was replaced by a window wall boasting 270-degree views of the water.

Cardello Architects not only relocated the kitchen, but also modified its spatial configuration to create a more user-friendly layout. The range anchors the design, more usable perimeter counter space and a generously-sized island, all included for functionality and entertaining. Kitchens by Deane was responsible for the design choices here and in the master bath.

Currently, a vacant adjacent lot enables unobstructed southern views towards Manhattan. "When we did the layout for the kitchen, we also needed to consider how to ensure water views if the neighboring lot becomes built upon," notes David. The solution was to extend the window length and position it strategically. A rear view of the home shows tiered balconies that perch on top of one another, also illustrating the attention dedicated to capturing water views from all angles of the narrow lot.

Structurally speaking, each renovation undertaken in the past never repaired what had been previously damaged. The magnitude of structural modifications presented an opportunity for Cardello to get it right. For example, the stairwell was completely redone since structural changes required it. And, because David and his team removed the platforms, ceilings appear higher, which is especially evident in the entryway and living rooms areas.

David is particularly pleased with the overall flow and progression through the home. "I really like the way the front entry sequence works," he says. "One approaches along the side of the house through the front door into a very modern element of the flat roof into the two-story stairwell, where you get only a peekaboo view of the water." Indeed, the drama is built gradually: the progression piques your curiosity by only hinting at the glory around the corner. As David sums it up succinctly, "You don't just give it all away at the front door."

Architect
Cardello Architects
David LaPierre
97 Washington Street
South Norwalk, CT 06854
203.587.8628

Greenwich Office
6 West Putnam Avenue
Greenwich, CT 06830
203.853.2524
cardelloarchitects.com

Photography: Dennis Carbo




LISA DAVENPORT DESIGNS

Cashmere & Blue Jeans[®]
style

FOR YOUR ENTIRE HOME



“Polished, supple, rustic and refined, we specialize in easy, chic, time-honored homes that are uniquely you.”

 @cashmereandbluejeans



Connecticut . Naples, FL
lisadavenportdesigns.com