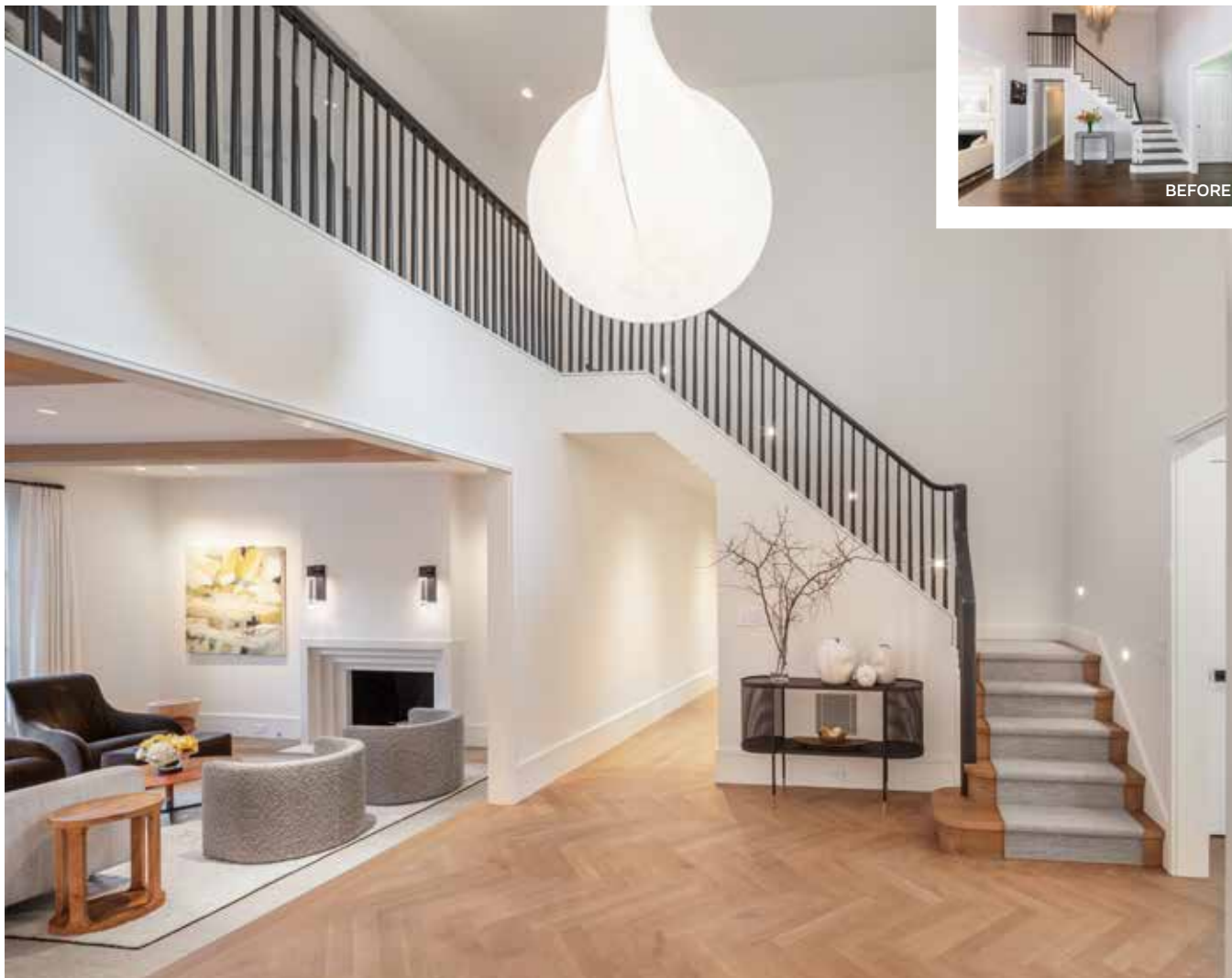


Cardello Architects



The Starting Point

We embarked on the transformation of a dated 1950s brick home in Darien, drawing inspiration from West Coast architectural styles. Our goal was to create a modern oasis that would provide a pristine and comfortable living space for the homeowners. We started with a thorough revitalization of the floor plan, prioritizing the establishment of a seamless indoor-outdoor relationship.

The Challenge

One of the main challenges we encountered was integrating the front entry with the surrounding lawn, given the challenging topography of the site. The landscape design required meticulous attention to detail to create a seamless connection. Additionally, we aimed to incorporate abundant glass elements throughout the home to establish a visual link with the outdoors.

The Elements

One of the standout features of the renovated home is the family room, which serves as the epitome of the harmonious indoor-outdoor connection. This space seamlessly connects to the outdoor area through a stunning bifold door, allowing for a smooth transition between the two environments. Strategically placed skylights flood the family room with natural light, creating a vibrant and inviting atmosphere for both the residents and their guests.



DAVID A. LAPIERRE



ROBERT A. CARDELLO

Cardello Architects
60 Post Road West | Westport, CT 06880 &
6 West Putnam Avenue | Greenwich, CT 06830
203-853-2524 | cardelloarchitects.com